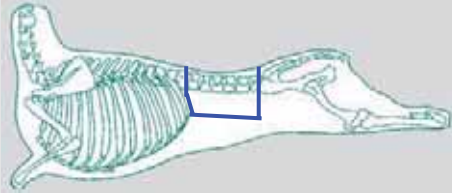


# Short Saddle - Stuffed

Loin L005



1. Position of the saddle on the carcass.

2. Bone-in saddle.

3. Remove both fillet muscles.

4. Remove the bark muscles.



5. Carefully remove the backbone, taking care not to cut through the external fat surface.

6. Remove fat deposits.

7. Position stuffing rolls in the backbone cavity and along the ventral edge of the eye muscles.

8. Cover the two outer stuffing rolls with the trimmed fillet muscles.



# Short Saddle - Stuffed - continued

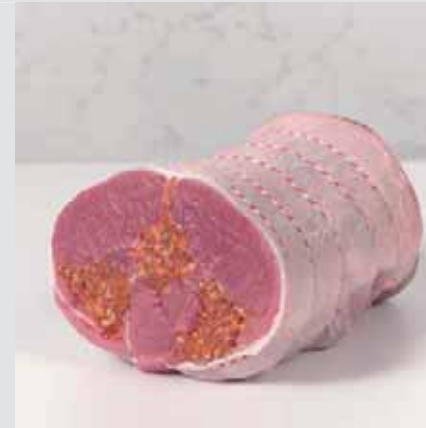
Loin L005



9. Form into a cylindrical shape making sure the stuffing stays in place.



10. Roll and tie securely with string at regular intervals.



11. The stuffed saddle prepared to specification and ready to use.